

OPERATOR'S MANUAL

MODEL 62 SP

This manual is an important part of the machine and must be maintained with the unit at all times. Read, understand, and obey the safety and operation instructions contained within this manual before operating the equipment.



Compost Topdresser



IMPORTANT SAFETY PRECAUTIONS



- Operator must read before using unit -

- 1. KEEP HANDS AWAY** from any moving parts of the spreader during operations.
- 2. NEVER** run spreader unless all guards are securely tightened in proper position.
- 3. NEVER** repair any parts or make any adjustments while machine is in motion.
- 4. NEVER** wear loose clothing around any moving parts of the machine.
- 5. NEVER** allow anyone to ride spreader.

**Failure to heed the above warnings may result in personal injury or death.*

MAINTENANCE



1. Entire unit must be washed thoroughly after each use. Never store material in spreader. Make sure all compost or topdressing material is cleaned out from engine muffler area. Direct a pressure washer nozzle both front and back through the slot openings in both side plates, aiming at both front and rear belt rollers. Move the unit several times with belt engaged to clean out completely.



2. Maintain proper **Air Pressure** in tires to ensure proper operation.

3. Be sure all **Shields** are in place before operating the unit.



4. The **Check Engine Oil** should be up to the “full” line on the oil dipstick. The engine uses 1/2 to 3/4 quart of 10W30 motor oil.



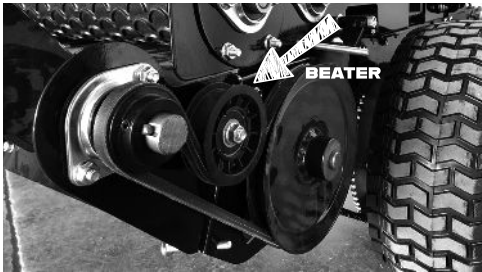
5. Check **Gasoline Level** in the fuel tank.



6. **Conveyor Belt Adjustment** is made easy by a single adjustment bolt on both sides of the machine. Loosen the four bearing-slide mounting bolts, then the adjustment jam nut. Begin tightening the adjustment bolts. When finished, re-tighten the bearing mounting bolts. The belt should have some “play” in it. Each side should be adjusted the same, with the same distance between the bolt head and the front of the adjustment block. Having the adjustment equal on both sides is critical for proper belt tracking and acceptable service life of the belt.

MAINTENANCE

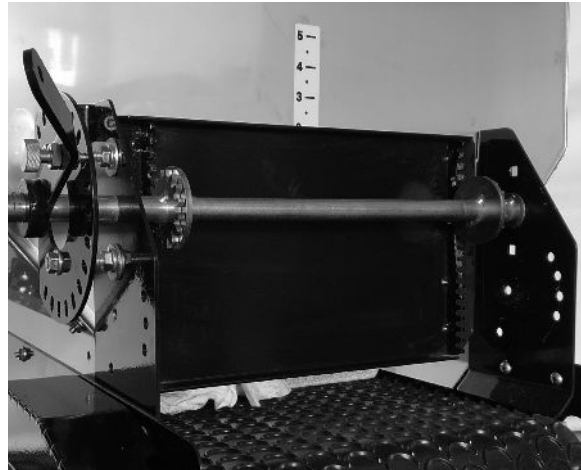
7. Check **Conveyor Belt** Tightness by feel through the slot openings in both side plates. A small amount of play (slack) is ideal; do not over tighten this belt!



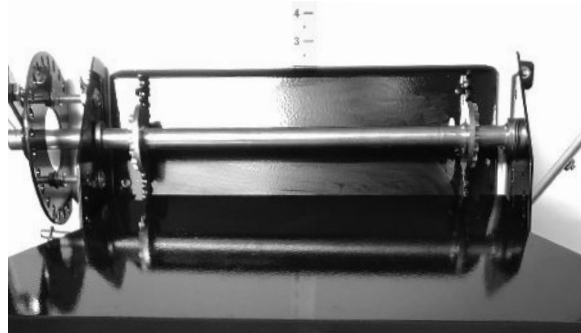
8. Adjust the **Beater and Conveyor Drives** by loosening the bolts that hold the chain and belt idlers, then re-tightening the idler sprocket bolts.



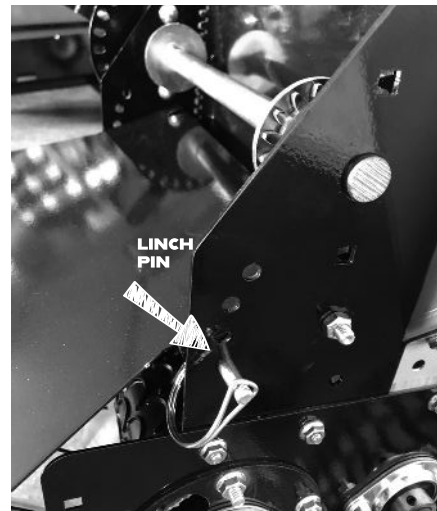
9. To tighten the **Main Drive Belt**, loosen idler the idler bolt underneath and slide in the appropriate direction. Finally, re-tighten the idler nut.



10. The **Metering Gate** is easily adjusted to change material flow to the beater by releasing a pull type locking pin in the crank and cranking the gate to the desired position.



11. The **Shroud** is easily adjusted to change the height of the material as it leaves the beater. Remove the two lynch pins, slide the shroud into the desired position and replace the pins in another of the holes provided.



OPERATION

1. Engine On/Off Switch - After completing all necessary maintenance, turn on the engine throttle switch to a running position. Engine runs at variable speed, adjust throttle as needed.



2. Pull the Start Rope by its handle to start the engine. Use choke adjuster as needed to start.

3. To Engage the Drive and move forward, lift up on the bar below the main handle.

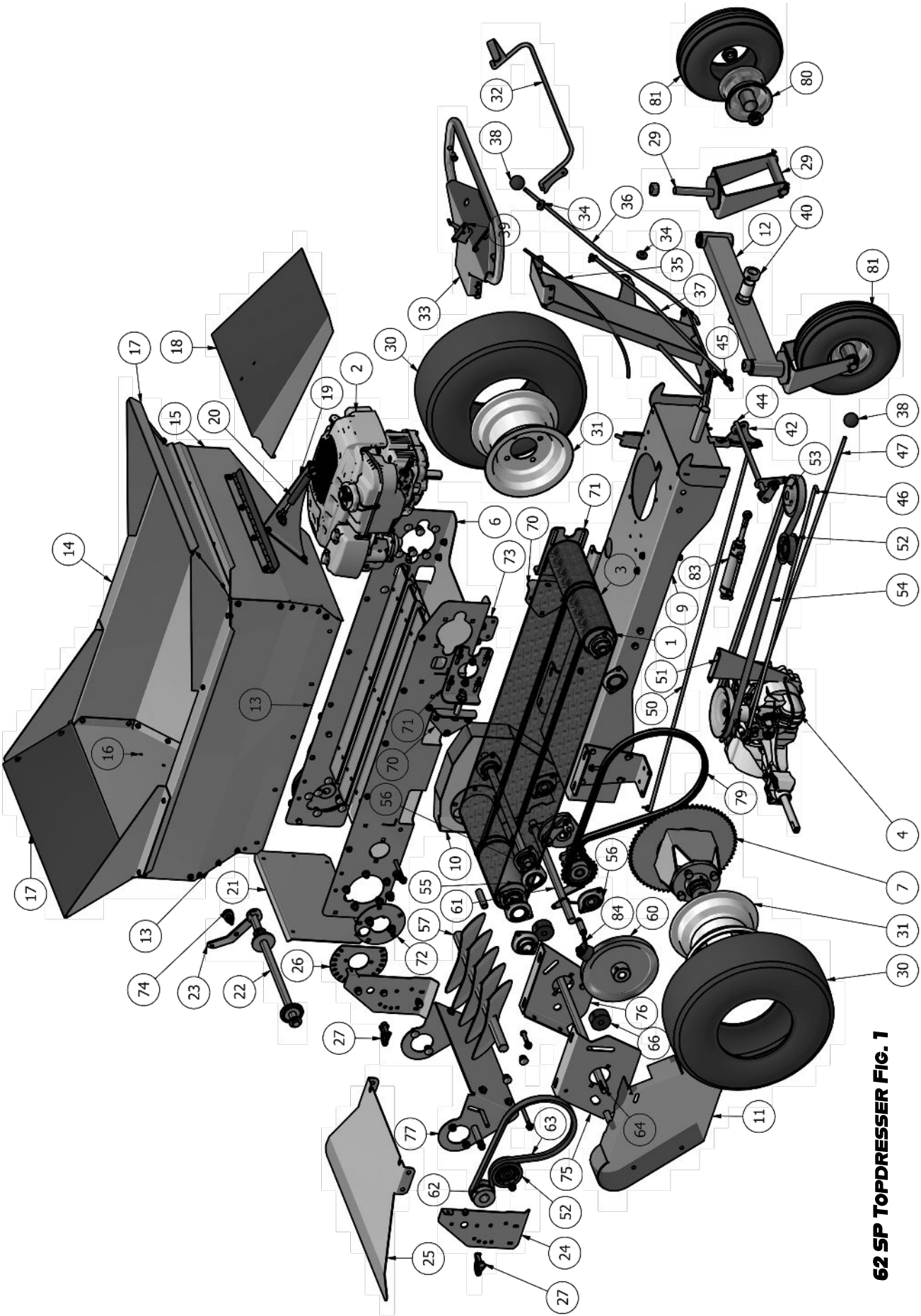
4. To Engage the Drive and move backward, pull down on the reverse lever on the right side of the main handle.

5. Engage and Disengage Conveyor Belt and Beater by using the engagement rod on the right side of the controls. Push forward to disengage. Pull back to engage.



PART NUMBERS

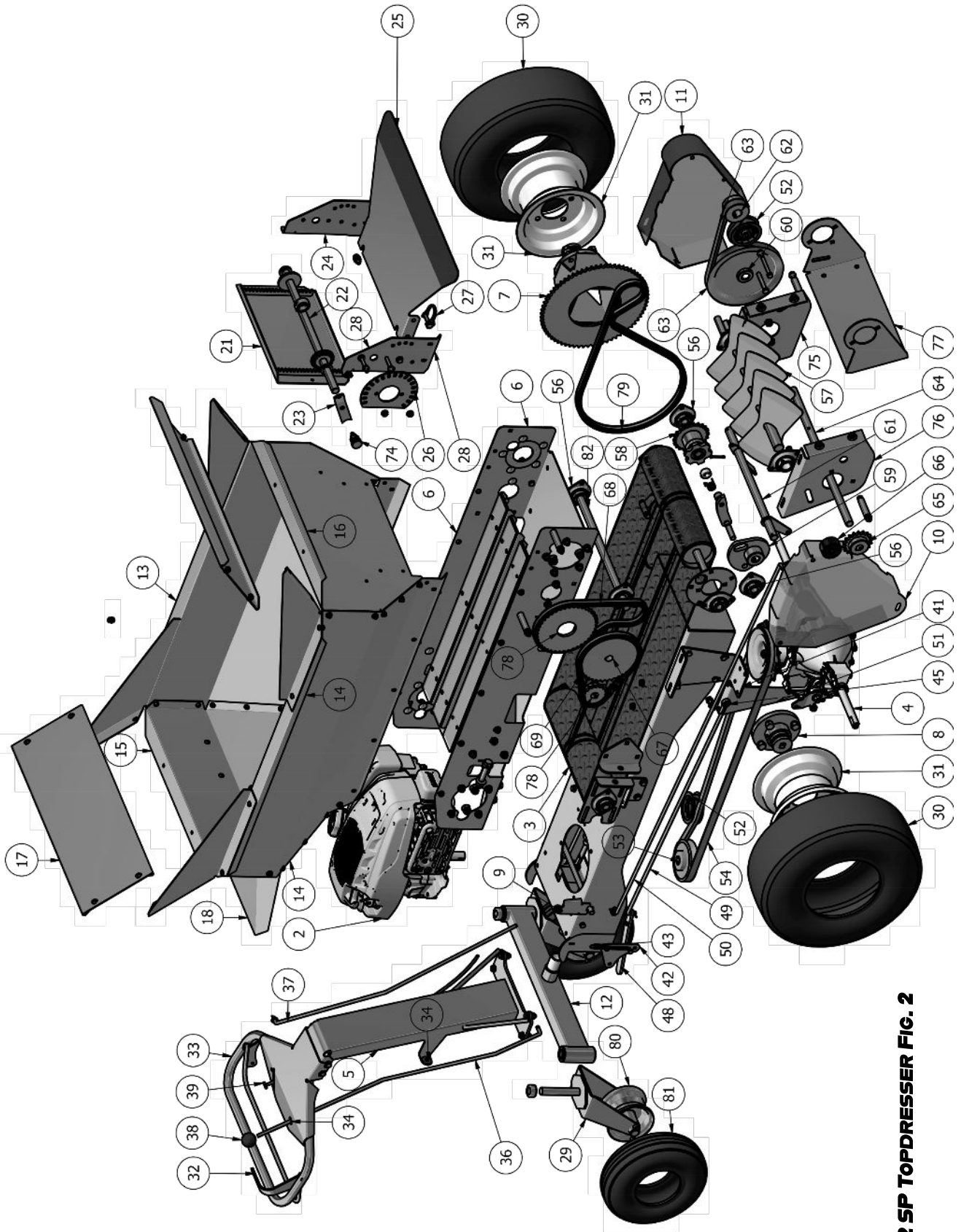
ITEM	QTY	PART NUMBER	TITLE
1	1	CMP621920	Idler Roller
2	1	CMP621521	125P020018F1
3	1	CMP621512	Conveyour Belt
4	1	CMP621520	T2-CBBE-3X3C-15X1 Transmission
5	1	CMP621927	Control Panel Assy
6	1	CMP621917	Box Frame Undercariage
7	1	CMP621915	Right Wheel Drive Hub
8	1	CMP621931	Left Wheel Hub Assy
9	1	CMP621936	Undercarriage Assy
10	1	CMP621042	Belt Drive Shield
11	1	CMP621938	Belt Shield Assy
12	1	CMP621937	Front Wheels Rocking Assy
13	1	CMP621058-SS	Box Side Right
14	1	CMP621059-SS	Box Side Left
15	1	CMP621060-SS	Box Front
16	1	CMP621061-SS	Box Back
17	2	CMP621077	Loading Chute
18	1	CMP621928	Engine Cover
19	1	CMP621007	Shock Mount
20	1	CMP621540	30 Lbs Gas Spring
21	1	CMP621923	Gate Assy
22	1	CMP621924	Gate Drive Shaft Assy
23	1	CMP621925	End Gate Handle
24	1	CMP621045	End Gate Frame
25	1	CMP621039	Beater Shroud
26	1	CMP621092	Gate Positioner
27	2	CMP621538	Wire-Lock Clevis Pin
28	1	CMP621045_MIR	End Gate Frame
29	2	CMP621912	Caster Fork Assy
30	2	CMP621534	16.5x6.5-8 Tire
31	2	CMP621535	9.25x6.25 Rim
32	1	CMP621929	Control Bar Assy
33	1	CMP621939	Control Handle Assy
34	2	CMP621542	Grommet 0.75
35	1	CMP621556	Throttle Cable
36	1	CMP621202	Clutch Stop Outside Rod
37	1	CMP621222	Forward-Reverse Outside Rod
38	2	CMP621548	Black Phenolic Plastic Ball Knob
39	1	CMP621541	Throttle Control
40	1	1 x 1.625 x 0.625	Shaft Collar
41	2	CMP621041	Transmission Mntg. Brkt.
42	1	CMP621932	Rocker Shaft Assy



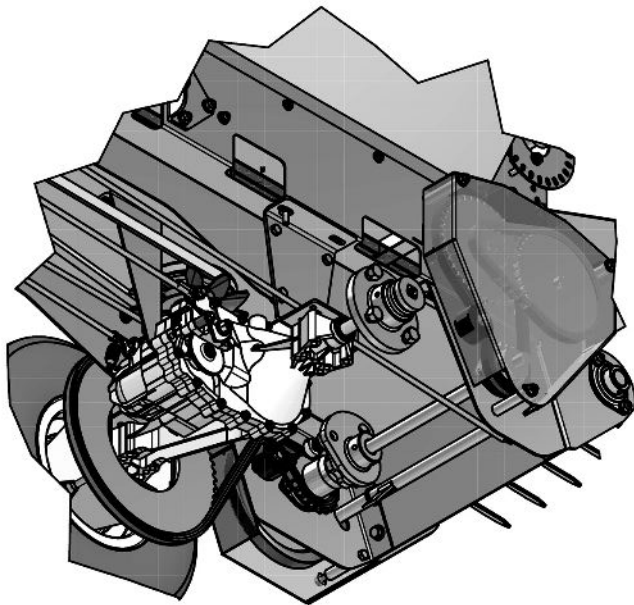
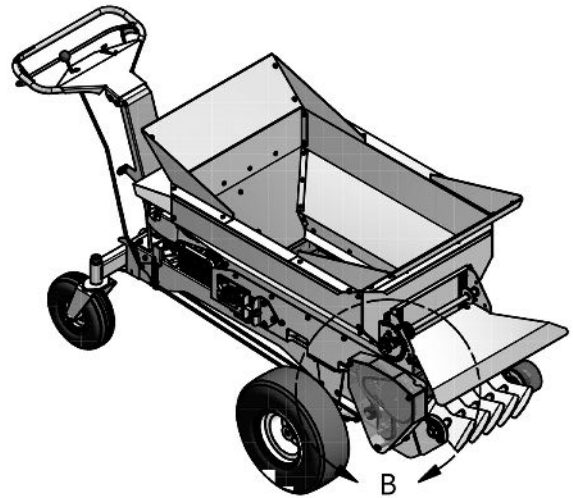
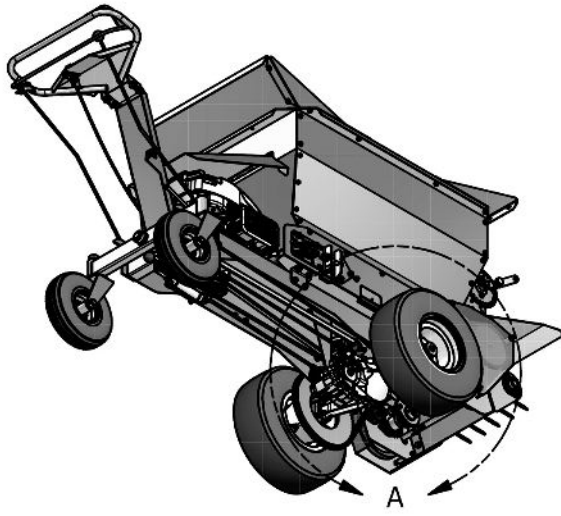
62 SP TOPDRESSER FIG. 1

PART NUMBERS

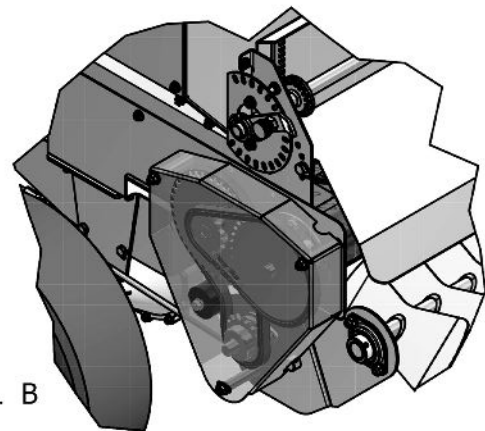
ITEM	QTY	PART NUMBER	TITLE
43	1	CMP621545	Clutch Shaft Spring C-181
44	1	CMP621933	Transmission Shaft Assy
45	3	CMP621547	Ball Joint Rod End
46	1	CMP621220	Forward-Reverse Inside Rod
47	1	CMP621219	Trans Engage-Disengage
48	1	CMP621074	Park Lever
49	1	CMP621225	Brake Rod
50	1	CMP621223	Clutch Stop Rod
51	1	CMP621086	Trans Brace
52	2	CMP621510	Composite Idler Pulley
53	1	CMP621514	Engine Pulley BK45X7/8
54	1	CMP621553	Main Drive Belt
55	1	CMP621919	Drive Roller
56	8	CMP621911	Stamped Pillow Block 0.75in
57	1	CMP621914	Beater Assy
58	1	CMP621909	Clutch Sprocket Assy
59	1	CMP621916	Clutch
60	1	CMP621906	Spreader Pulley Assy
61	1	CMP621918	Clutch Stop
62	1	CMP621526	2.5" Dia Belt Pylley
63	1	CMP621525	Beater Drive Belt A-36-G V
64	1	CMP621209	Clutch Shaft
65	1	CMP621507	40B18 x 3/4" Sprocket
66	2	CMP621513	Chain Guide
67	1	CMP621522	40B40 x 0.75" Sprocket
68	1	CMP621550	Clutch Chain 40
69	1	CMP621551	Belt Drive Chain 40
70	2	CMP621021	Brkt. Pulley Tightener
71	2	CMP621020	Pulley Tightener
72	2	CMP621053	Drive Bearing Pulley Plate
73	2	CMP621019	Conveyor Bracket
74	1	CMP621539	Retractable Spring Plunger
75	1	CMP621015	Drive Bracket RH
76	1	CMP621043	Drive Brkt. LH
77	1	CMP621050	Beater Bracket
78	1	CMP621940	Double Sprocket 16-40
79	1	CMP621552	Main Wheel Drive Chain
80	2	CMP621530	Tire Rim
81	2	CMP621529	Front Swivel Tire
82	1	CMP621211	Idler Shaft
83	1	CMP621941	Air Cylinder Assy
84	1	CMP621942	Pulley Pawl Assy



62 SP TOPDRESSER FIG. 2



DETAIL A



DETAIL B

Earth & Turf Products, LLC is a company dedicated to developing new, innovative equipment that delivers great productivity. We achieve this by solving everyday, real-world problems.

Earth & Turf Products, LLC is continually striving to improve its designs, products and services.

We reserve the right to make improvements or changes when it becomes practical and possible to do so, without incurring any obligation to make changes or additions to previously sold equipment.

Model 62 SP Topdresser

LIMITED WARRANTY

Earth & Turf Products, LLC warrants to the original Purchaser, all Earth & Turf Products products, manufactured by it, to be free from defects in both material and workmanship under normal use and service.

Earth & Turf Products, LLC obligation under this Warranty shall be limited to replacement or repair of any parts thereof, free of charge to the original Purchaser, at its place of business, provided, however, that the part(s) to be replaced or repaired, shall **within 2 years** after delivery to the original Purchaser, be demonstrated to be defective: which determination shall be made by Company.

The said components or parts must be returned through the Selling dealer or distributor directly to the Company with all transportation charges prepaid.

Notice of defects shall be furnished in writing to the Seller and to the agent through whom the machinery was received, disclosing in full all known defects and failure in operation and use, and reasonable time shall be given to the Seller to remedy any such defects and failures.

Failure to make such trial or to give such notice shall be deemed an absolute acceptance by the Buyer and satisfaction in full of this Limited Warranty.

Under no circumstances does this warranty cover normal wear of any parts, components or material which, in the opinion of the Seller and the Company, have been subjected to neglect, misuse, alteration, accident, or if repaired, with parts other than those manufactured by and obtained from **Earth & Turf Products, LLC**.

This Warranty does not cover components which are already covered by a separate Warranty provided by the supplier of said parts or components.

Earth & Turf Products, LLC's obligation under this Warranty is limited to repair or replacement, free of charge to the original Purchaser, of any part which in the judgement of the Company is defective.

THIS WARRANTY IS MADE EXPRESSLY IN LIEU OF ALL OTHER WARRANTIES, EXPRESSED OR IMPLIED, INCLUDING ANY WARRANTY OF MERCHANTABILITY AND FITNESS FOR USE AND PURPOSE AND OF ALL OTHER OBLIGATIONS OR LIABILITIES ON ITS PART AND ANY IMPLIED PERSON TO ASSUME FOR IT, ANY OTHER LIABILITY IN CONNECTION WITH A SALE OF THESE PRODUCTS.

THIS WARRANTY SHALL NOT APPLY TO THESE PRODUCTS OR TO ANY PART THEREOF WHICH HAS BEEN SUBJECT TO ACCIDENT, NEGLIGENCE, ALTERATION, ABUSE OR MISUSE.

- The Company makes no warranty whatsoever in respect to accessories or parts not supplied by the Company. The term "original Purchaser", as used in this Warranty, shall be deemed to mean that person for whom the product is originally supplied.
- The Company, under this Warranty, cannot guarantee that existing conditions beyond its control will not affect its ability to obtain materials or manufacture necessary replacement parts.
- The Company reserves the right to make design changes, or specifications at anytime, without any contingent obligation on its parts to purchasers of machines and parts previously sold. No one is authorized to alter, modify or change the terms of this Warranty in any manner.
- The Company warrants the Construction of the equipment sold herein and will replace it at its expense for a period of 2 years from the date hereof, any parts which prove defective as determined under the terms of this Limited Warranty.
- This Warranty shall apply only within the boundaries of the continental United States.





CONESTOGA MANUFACTURING, LLC.
1867 KIRKWOOD PIKE | KIRKWOOD, PA 17536

FAX: 717-529-6746 **888-693-2638**